

# Saint John's Spirit

St. John's Episcopal Church • Crawfordsville, Indiana  
The Rev. Todd Kleffman, Rector (765) 362-2331

October 2008

stjohnscville.org

Editor: Cindy Turner  
newsletter@stjohnscville.org

---

---

## From the Rector

### Binocular Vision

**Intention: To use binocular vision to help us grow spiritually and as solid persons**

Binocular vision (being able to see with two eyes) can be taken for granted all too easily. We get up and move through the day depending on this gift to help us drive, play golf, negotiate steps, and a host of other things. Life can be very tough without binocular vision. I know because a friend of mine only has the use of one eye. The result has been a need to compensate for his lack of depth perception. Depth perception is the great gift of binocular vision, allowing us to discern goals and how to bridge the distances required to reach them.

Baseball requires binocular vision to pitch, hit, catch, run bases, and throw balls to waiting basemen. A team has to be able to keep both eyes on the ball and other players in order to make it successfully through a game. Our Christian life in the world requires binocular vision too. Clergy may wish that more parishioners only had eyes for time with God or "churchy" things, but that would not necessarily be for the best. God chose to give us two eyes; one to see the spiritual life (with its emphasis on prayer, community, spiritual reading, service, worship, etc.) and one to see the more earthly side of life with its needs and enticements (housing, human relationships, other physical and psychological necessities, along with desire for physical and emotional comforts, even luxuries). We seem cursed with one foot in the world and one in the realm of God.

What's a person to do? Use binocular vision! We can employ our two sets of eyes to gauge how we are doing in our spiritual and earthly lives. We can take a look at how both worlds (spiritual and earthly) come together and get our bearings on where we are actually headed and where we need to go. We can get a sense of the actual distances involved and begin to set priorities and make plans for how to get to our spiritual goals. Once these are in place, we can return to our earthly lives and make some honest decisions about what needs to stay and what needs to change.

What do you see when you consider the needs for growth in your spiritual and earthly life? **The Following are some suggestions for vision improvement:**

**Wednesday Night Live:** Start your vision improvement plan off with gaining clear guidance in learning the best ways to read and study the Bible in user friendly ways. **6:15-7:30 pm from 1 October to the 2<sup>nd</sup> Wednesday in May. Child care is provided.** Bring nutritious snacks and juice to share. They need not be elaborate.

**Family Discussions:** Meeting regularly to determine what is really most necessary in our day to day "earthly" lives and make plans to reduce or eliminate those things that only add to our stress without producing growth as healthy humans, families, our Spiritual People.

**Last Fruits:** Having trouble believing that if you give substantially of your substance to benefit the church and those it touches? Start easy. Work with the Stewardship Committee to reflect on your pledge, but also begin saving your change, the "last fruits" of every dollar. We can see how the Holy Ghost multiplies that change to help the church and to help our faith grow. If left over change can add up, imagine what God can do with your dollars. Speaking of that earthly eye, see how God begins to help you deal with financial choices and providential support. **Two youth will be on hand the first of every month to collect the previous month's change,** take it to bank for counting, and deposit it in St. John's "Holy Ghost Fund".

**Worship Leader Development:** Take a chance with worship service. See how solid training to serve as Acolytes, Crucifers, Lay Eucharistic Ministers (LEMs), and Lectors can actually add to your spiritual growth, particularly if more people would become willing to step out in faith and learn. We can always use more people to help. The more people that help, the less stressful it is all the way around. Changes with how Liturgy Committee conducts this training should help make trainings both individual according to people's time schedules AND should make it possible to get various worship leaders together as a group for learning and fellowship at least once a year. Why group? To keep us all on the same page.

**Adult Forum in November:** It is impossible to know where you are and who you are unless you know where you came from. Attend this 5 month long history of the Episcopal Church led by Fr. Todd, Helen and Marc Hudson, Larry Bennett, and Joe O'Rourke. We kick off Sun. November 2 with a special guest speaker from Wabash who will give us the grand sweep of the 1500's. The following week Fr. Todd will take the Reformation to England and then we are off and running.

*Then God said, "Let the earth produce every sort of animal, each producing offspring of the same kind – livestock, small animals that scurry along the ground, and wild animals." And that is what happened. God made all sorts of wild animals, livestock, and small animals, each able to produce offspring of the same kind. And God saw that it was good. Genesis 1:24-25 (NIV)*

## Notes from the Vestry

From Marc Hudson, Clerk of the Vestry

The vestry met on Monday, September 22nd. The vestry will be seeking a new class of vestry members this Fall as the class of 2008 prepares for its exit from the vestry at the end of the year. Please discern if you have a calling for serving on the vestry, and let Adrienne Ashbaugh know if you do. Will Turner, St. John's Treasurer, reported that our September finances appear to be in good shape. He continues to develop a detailed picture of what St. John's is spending its money on each year. Kathy Gary reported that we had a successful Rally Sunday for youth Christian education a few weeks ago. Sam Hildebrand asked for funding for two items: a new sign for St. John's to be placed perpendicular to Green Street in front of the Church and work to be done to improve the cabinetry of our kitchen. Funding for both projects was approved. The vestry also considered new ways of fundraising, though for the time being the only upcoming fundraiser will be our lobster sale and dinners, now scheduled for the spring.

## Christian Education

### Sunday School "Who News"

September 14 was our Rally Sunday at St. John's. We have signed up 11 youth to be in our Sunday School--plenty room for MORE!!!

Thanks to Jackson, Anna, 2 Erins, Cindy and Hannah (Assistant Christian Ed Director) for all their help. Thanks to Barb and Vern Easterling and John Culley for their help in September. We all know more about our Church building at St John's and how acolytes serve our Parish.

October brings "Who will feed the hungry?" Jane Gallagher will speak on Outreach programs and Father Todd will teach us more about what Communion means in the Episcopal Church.

p.s. Don't forget Bible Stories at Wednesday Night Live!!

Come join us! For more info contact Kathy Gary (361-1468).

## Outreach

### Blessing of the Animals

Father Todd will be blessing the animals at the Animal Welfare League Shelter on Sunday, October 5th at 2:00 P.M. You are invited to bring your pet to be blessed at the service, along with a gift for the animal shelter, if you desire. Items on the AWL wish list are:

dog treats	tennis balls
litter pans	creamy peanut butter
flea shampoo	baby wipes with no alcohol
baby comforters	grooming brushes
sturdy dog and cat toys	

money is always welcomed.

If you are not planning to go and would like to donate, the Outreach Committee members will make sure that your donations reach the animal shelter.

## St. Martha's /St. Andrew's Guild

Have you ever counted the people who serve each Sunday as our parish gathers? Each week there are 4 acolytes, 3 LEMs, 2 greeters, 2 coffee hour workers, 2 who tally the offering, and 2 who set up the altar. There are many others who sing in the choir and teach our children.

PLEASE consider giving a positive response when those making the schedule for the rest of the year request help from YOU during the weeks ahead.

## United Thank Offering

### UTO Ingathering is Sunday, November 2 (All Saints Sunday)

The **United Thank Offering** is a program of The Episcopal Church for the mission of the whole Church, founded by and administered by women since 1889. The United Thank Offering Committee is entrusted to promote thank offerings, to receive the offerings and to distribute the United Thank Offering monies through grants. The Committee awards and administers these grants within the framework of the policies and procedures of the Domestic and Foreign Missionary Society (DFMS) of The Episcopal Church.

**We will significantly impact the lives of women and children because of Christ's love.** To achieve this vision we will focus particularly on projects that implement significant change toward alleviating profound human suffering that the Millennium Development Goals address. Our work will directly impact the lives of women and children, and will continue our historic mission to address compelling human need and expand the mission and ministry of the church. Our new vision will be reflected in the 2009 UTO grant criteria and awards.

**We encourage you and your family to make daily offerings, with the following prayer:** *Almighty and most merciful God, we remember before you all poor and neglected persons whom it would be easy for us to forget: the homeless and the destitute, the old and the sick, and all who have none to care for them. Help us to heal those who are broken in body or spirit, and to turn their sorrow into joy. Grant this, Father, for the love of your Son, who for our sake became poor, Jesus Christ our Lord. Amen.*

**Please pick up your UTO Blue Box, available next to the Sunday Bulletins.**

## Parish Life - Youth - Outreach

Next up for Parish Life will be a joint Parish Life-Youth-Outreach event on Sunday, October 26. This will begin with the annual CROP Walk for hunger relief, which St. John's parishioners have participated in for many, many years. It is approximately a 6-mile walk which begins at 2:00 pm from Christ United Methodist Church (East Main St.). Anyone is welcome to walk, jog or slowly stroll \*or\* to sponsor another who is completing the walk. This is a worldwide hunger relief effort, but 25% of the money raised does stay here in Montgomery County, to help with the FISH food pantry.

Following the CROP Walk will be an all-parish pitch-in soup, salad & bread dinner at the church. We'll gather around 4:30 and eat around 5:00. We hope many of you will come, whether you participated in the walk or not! For youth, after the dinner there will be a movie night. We'll end pretty early (around 8:00), in case you have homework to complete.

For questions or to obtain a CROP Walk packet or to sponsor a walker, contact Susan Albrecht @ 361-0036 or susiequisie23@sbcglobal.net, and please be on the lookout for a sign-up sheet for the pitch-in soup supper.

## Newcomers / Hospitality

Kitty and Herm Haffner invite you to a potluck dinner on Friday, October 10 at 6:00 p.m. There will be a sign up sheet in Whitlock Hall if you can come or let Kitty know at khaffner@wico.net. Bring a covered dish to share and your beverage of choice. Because of limited parking space, they recommend carpooling if you can -- and just past their driveway is a conservancy field that will be used for parking cars. Kitty would prefer those who have difficulty walking to plan to park in the driveway. If it is a cool evening, bring a jacket because we can (and may have to) sit on the patio, screen porch and/or dock!!

Directions to the lake:

- \* Take 47 South (past Pizza Hut, CHS)
- \* Turn RIGHT on 400 South -- Airport Road (Bal Hinch grocery on left)
- \* 400S winds around 3-4 curves - turns into 450S - stay on black top roads.
- \* Turn LEFT on Iroquois Drive.
- \* Go to the end -- turn LEFT on Arrowhead Drive.
- \* Go 7 houses - (past Apache Dr) - Green house on wooded lot - right/lake side. Drive will be marked with a sign/balloons so you won't miss it! 3229 West Arrowhead; 866-1640.

## In Other News...

### Grief Recovery Workshop

Sunday October 5th is the start for the 6 week long Sunday evening Grief Recovery Workshop held at New Hope Christian Church. This is the start of the 11th year of the program. Brochures are in Whitlock hall. Meetings start at 6 P.M." See Jim Suren for further details and a brochure.

### Coffee Project

*What is Fair Trade Coffee?*

Equal Exchange, a worker-owned cooperative business founded in 1986, has created a system that allows small-scale farmers to sell their products directly to buyers in the United States. The company is located in Massachusetts and works with small farmer cooperatives in Africa, Latin America and Asia to bring coffee, tea, chocolate, cocoas and snacks directly to us. By cutting out the middlemen, Equal Exchange pays the farmers more and gives you a better value. An organization located in Germany (Fairtrade Labeling Organization) handles certification of the commodities and the products are distributed directly to consumers, in supermarkets and through the Interfaith Program. The latter allows faith-based relief, development and human rights organizations learn about and promote Fair Trade products.

The information for this short article and lots, lots more can be found at the Equal Exchange web site: [www.equalexchange.coop](http://www.equalexchange.coop). Nancy will be ordering coffee on 15 October. If you'd like to place an order of coffee, please add your name to the list on the credenza.. For more information, contact Nancy Bennett.

### Safeguarding God's Children

You will be hearing more about this in the coming weeks. The diocese has developed a 17 page document of policies to be implemented and an on-line training that will be required of all staff (paid or volunteer), especially those who have contact with children and youth. The vestry will be digesting this material as will the Christian Education Committee to see how these policies should be best applied at St. John's. More info will be forthcoming.

### October 12 - Jack Brockman Concelebrates

Father Jack Brockman will preach and concelebrate with Father Todd at both worship services.

### One Pound Coffee Cans Needed

The Altar Guild is in need of one pound coffee cans to contain flowers after the services. If you have any, please bring them to church!

## Welcome to the World!

Abigail Morgan Homisher, daughter of Kaleen Dowdy and Shawn Homisher, was born on Aug 31 at 415am. She weighed 7lb 3oz and was 20.5 inches long.

## Directory Updates

Jim & Linda Janci	1823 Country Club Road
Carolyn Perkins	wiseskywoman@yahoo.com
Kirk Smith	mr_kirkles@yahoo.com
Meribeth Kussmaul	meribethK@aol.com
Barbara Penney	barbara_penney@yahoo.com

## Up For Adoption

These are two of the adorable animals up for adoption at the Animal Welfare League.

### Maisy

Puggle (Pug/Beagle Mix)

Medium \* Adult \* Female \* Dog

My name is Maisy and I'm a silly dog. I like to play with squeaky toys and other dogs. I walk well on a leash and I like to sit for treats. I need to be spayed as soon as possible. I'm about 18 months old so I'm still very playful. Come take me for a walk sometime! Current with vaccinations, worming and heartworm tested. Total adoption fee is



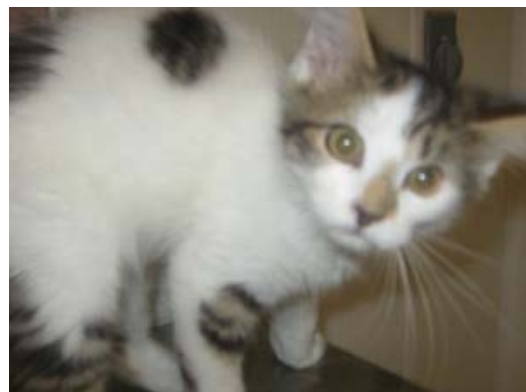
\$100.00.

### Charles Schwab

Domestic Medium Hair - White

Small \* Baby \* Male - Cat

I'm a crazy kitten! My sisters, Merrill Lynch and Wachovia, were adopted so now I'm looking for my forever home. I love to play with other cats. I would do great in a home with dogs, cats, and children. Come play with me! Charles Schwab is current with vaccinations and worming



and is already house trained. The total adoption fee is \$50.00.



## Scenes from Family Camp



## Wabash Tailgating

Over 20 St. John'sers met up in the football stadium parking lot for a tailgating party before the Wabash-Univ. of Chicago game last Saturday. Chris Redmaster grilled up some awesome burgers & brats, and we had a great spread of dishes to go alongside. (Be sure to include Peggy Lohorn on any tailgating invitation list -- she brings GOOD eats!) Thanks to all who came and shared in the fun. It was a beautiful day, and Wabash won handily.



## Trivia Challenge!

Here is the second installment of the 2008.2009 St. John's Trivia Challenge. Last month's response was quite low, so I'm re-running those questions. If you know the answer to a question (or think you know the answer), submit it to the newsletter editor (newsletter@stjohnscville.org) by the next newsletter deadline with "Trivia" as the subject. We'll keep track of correct entries and a prize will be awarded at the end of the school year .

1. Who was the first American Episcopal Bishop and where was he ordained?
2. When was St. John's established?
3. When did Paul first appear in the Bible? (Either chapter & verse or situation is ok)

## Calendar

October 1      Wednesday Night Live! Begins  
 October 5      Blessing of the Animals, 2pm, Animal Welfare League  
 October 10     Parish Potluck at Herm & Kitty Haffner's home  
 October 15     Music and Meditation, 6:30pm

Ongoing Events  
 EFM - Tuesday nights, 7pm  
 Confirmation - Third Sunday, after the 10:30am service

## Sunday Servers

Service	LEM	Lector	Crucifer/ Acolyte(s)	Altar Guild	Offering Tally
10/5 8am	Larry Baumgardner	Diane Ault	Teresa Anderson		
10/5 10:30	Marc Hudson & Kim Roberts	Helen Hudson	Steve Charles / Derek Long & Kristen Albrecht	Carole Meyer & Jane Gallagher	Nancy Bennett & Susan Albrecht
10/12 8am	Elaine Pickering	Judy Wynne	Kitty Haffner		
10/12 10:30	Vern Easterling & Adrienne Ashbaugh	Barb Easterling	Mike Lohorn/ Peggy Lohorn & Andrew Patterson	Cyndy Fields & Bethany Fields	Merry Worley & Cindy Smith
10/19 8am	Meribeth Kussmaul	Marc Kussmaul	Hanna Anderson		
10/19 10:30	John & Betty Culley	Betty Culley	Sam Hildebrand/ Libby Pinkerton & Alex Pearson	CJ Charles & Kim Roberts	Tom Twarek & Jim Smith
10/26 8am	Vern Easterling	Mike Scime	Diane Ault		
10/26 10:30	Jim Suren & Jane Gallagher	Jim Gary	Chris Redmaster/ Erin Redmaster & Anna Redmaster	Meegan Reidy & Betty Culley	John Roberts & John Culley

The Church office is open from 9am - noon, Monday through Friday  
 Father Todd's office hours are from 10am - noon, Monday- Thursday, and by appointment

The next Newsletter submission is due by Friday evening, 6:00 p.m. October 24.

**St. John's Episcopal Church**  
**212 South Green Street**  
**P. O. Box 445**  
**Crawfordsville, IN 47933**

**NON-PROFIT ORG.**  
**U.S. POSTAGE**  
**PAID**  
**PERMIT #253**  
**CRAWFORDSVILLE, IN**

Dated Material — please deliver by—September 30